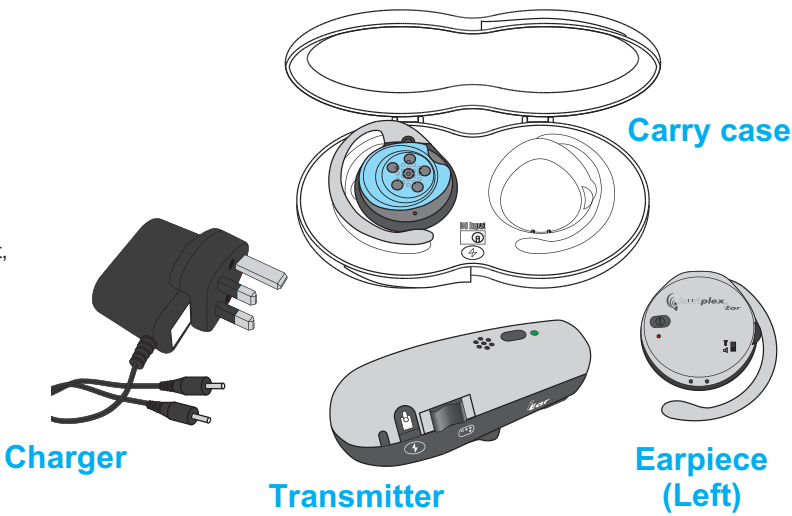


# Auriplex iEar Basics

Congratulations on the purchase of your Auriplex iEar.

## What can your iEar System do for you?

- Improve your ability to hear in difficult situations.
- Cut out distracting sounds and focus only the sounds you want to hear.
- Give you the ability to hear from up to twenty-five metres.
- Significantly enhance the output of any of your existing audio equipment, e.g. personal music player, hearing aid, mobile.
- Create your personal induction loop to use with any T-switch enabled hearing aid device.
- Ensure you hear individual voices within a small group.
- And much more!




# The Earpieces

**Earpiece:** Collects sound from the transmitter and delivers high quality audio to your ears. The replaceable silicone Ear-pads offer maximum comfort and hygiene. The specially designed Ear-pads are fully washable and sweat resistant.

- 1. **ON/OFF button**
- 2. **ON/OFF indicator**
  - Blue LED:** Indicates left earpiece is operational.
  - Red LED:** Indicates right earpiece is operational.

- 3. **Volume control:** Slide down to increase volume and up to reduce.
- 4. **Retaining arm**

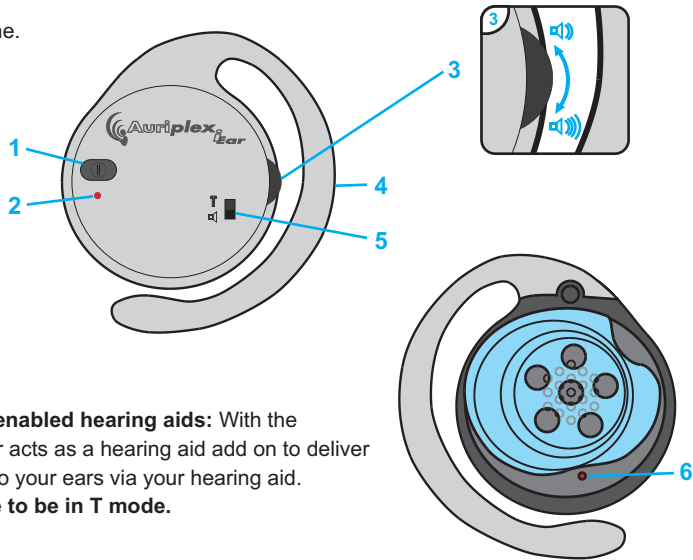
## 5. Output Selector- Listening options

 Activates iEar's In-built speaker.

**T**


**Using your iEar with T switch enabled hearing aids:** With the earpieces set in T mode, the iEar acts as a hearing aid add on to deliver clear sound devoid of feedback to your ears via your hearing aid. **Your hearing aid will also have to be in T mode.**

- 6. **Charging Indicator:** Shines **red** during charging.

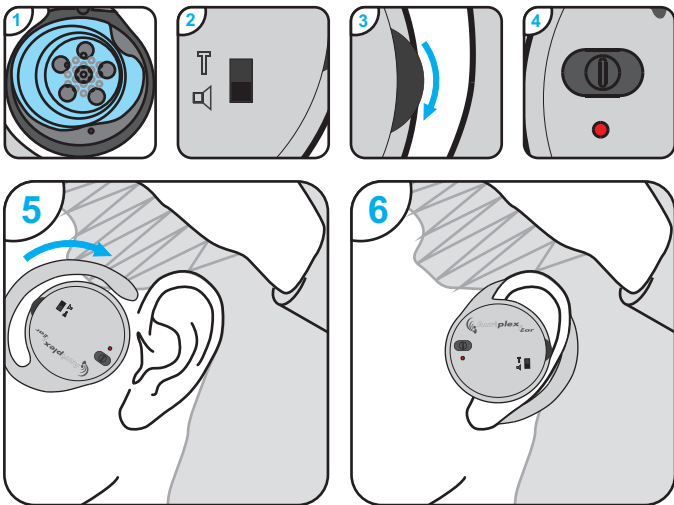


# Wearing your Earpieces

Before use, ensure that your system is fully charged.

- 1. Check that the silicone ear-pads are in position.
- 2. Select the output option.  or **T**
- 3. Turn down the volume.
- 4. Switch it on by pressing the ON/OFF button so the front light comes on.
- 5. Ensure the space around the top of your ear is free, and keeping this the case:
- 6. Place the end of the retaining arm at the top of your ear and rotate the earpiece backwards until a secure and comfortable fit is achieved with the retaining arm sitting behind your ear.

Should you need further information, do please consult us online at <http://www.auriplex.com> or ask your hearing aid audiologist.



# Charging iEar System

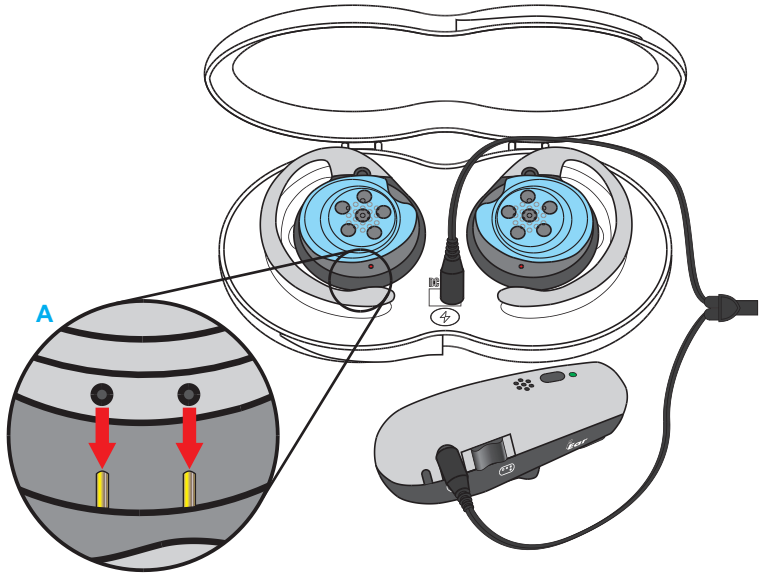
Your earpieces should be charged and stored in the convenient carry case. The transmitter can be charged at the same time.

## Placing your Earpieces in the Carry Case

Insert each earpiece carefully into its appropriate slot as indicated, taking care not to damage the golden charging pins as in illustration A below.

## Charging your iEar system

- 1. Plug charger into the mains but **DO NOT** switch on.
- 2. Connect the charger to the transmitter and to the carry case with earpieces securely in place.
- 3. Switch **ON** at the mains. **Red LED** will illuminate on both Earpieces and transmitter to indicate charging. A Full charge will take approx. 2 hours and last 18 hours approximately. The **LED** will shine **blue** on full charge.

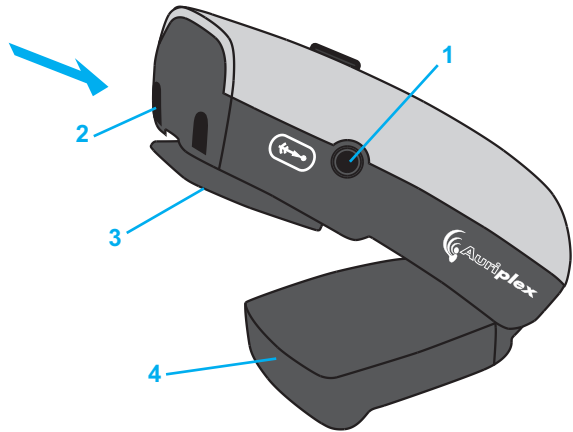


# The Transmitter

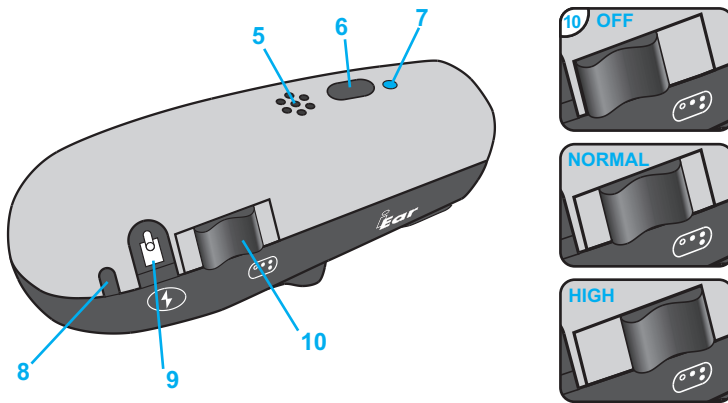
This unique device effectively becomes your portable ear. You can strategically position it for your maximum benefit in a wide range of hearing environments. Your listening experience can be even further enhanced by customising your settings.

The transmitter can be attached to clothing, worn around the neck with the lanyard or free standing on any suitable flat surface.

- 1. **Direct audio input:** Listen to devices such as a television, or an iPod on your earpieces through this port.
- 2. **Directional microphone:** Picks up sound coming in the direction of the blue arrow.
- 3. **Clip:** Allows attaching the transmitter to your clothing or to other's.
- 4. **Table stand:** Open to stand the device on a flat surface.
- 5. **Surround sound microphone:** Picks up sound coming from all directions.



- 6. **Microphone selector:** Press this button to switch between the surround sound and directional microphones.
- 7. **Indicator for selected microphone**
  - Blue LED:** Indicates sound will be picked up only in one direction only.
  - Red LED:** Indicates sound will be picked up from all directions.
- 8. **Charging indicator:** Shines **red** during charging.
- 9. **D.C. power input:** Used to charge the transmitter.
- 10. **OFF/Normal/High switch**
  - 'Normal' mode: Turns the transmitter on to a normal sound level.
  - 'High' mode: Boosts the sound to its maximum level.



Auriplex Ltd.

23, Cambridge Science Park  
Milton Road,  
Cambridge CB4 0EY, United Kingdom

T +44 (0) 1223 437010 E [info@auriplex.com](mailto:info@auriplex.com) W <http://www.auriplex.com>

