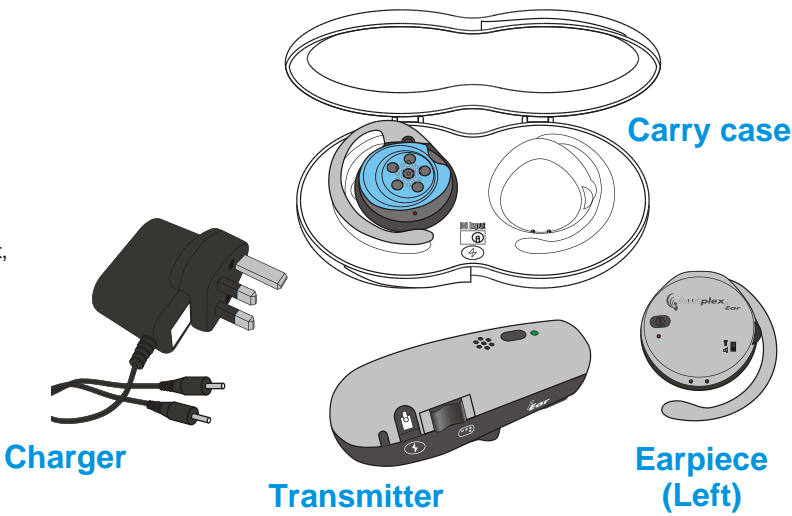


Auriplex iEar Basics

Congratulations on the purchase of your Auriplex iEar.

What can your iEar System do for you?

- Improve your ability to hear in difficult situations.
- Cut out distracting sounds and focus only the sounds you want to hear.
- Give you the ability to hear from up to twenty-five metres.
- Significantly enhance the output of any of your existing audio equipment, e.g. personal music player, hearing aid, mobile.
- Create your personal induction loop to use with any T-switch enabled hearing aid device.
- Ensure you hear individual voices within a small group.
- And much more!




The Earpieces

Earpiece: Collects sound from the transmitter and delivers high quality audio to your ears. The replaceable silicone Ear-pads offer maximum comfort and hygiene. The specially designed Ear-pads are fully washable and sweat resistant.

- 1. **ON/OFF button**
- 2. **ON/OFF indicator**
 - Blue LED:** Indicates left earpiece is operational.
 - Red LED:** Indicates right earpiece is operational.

- 3. **Volume control:** Slide down to increase volume and up to reduce.
- 4. **Retaining arm**

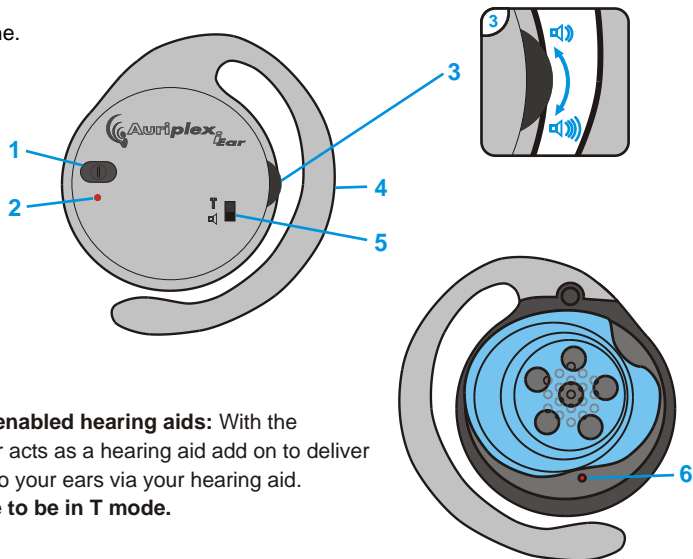
5. Output Selector- Listening options

 Activates iEar's In-built speaker.

T

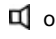
Using your iEar with T switch enabled hearing aids: With the earpieces set in T mode, the iEar acts as a hearing aid add on to deliver clear sound devoid of feedback to your ears via your hearing aid. **Your hearing aid will also have to be in T mode.**

- 6. **Charging Indicator:** Shines **red** during charging.



Wearing your Earpieces

Before use, ensure that your system is fully charged.

- 1. Check that the silicone ear-pads are in position.
- 2. Select the output option.  or **T**
- 3. Turn down the volume.
- 4. Switch it on by pressing the ON/OFF button so the front light comes on.
- 5. Ensure the space around the top of your ear is free, and keeping this the case:
- 6. Place the end of the retaining arm at the top of your ear and rotate the earpiece backwards until a secure and comfortable fit is achieved with the retaining arm sitting behind your ear.

Should you need further information, do please consult us online at <http://www.auriplex.com> or ask your hearing aid audiologist.

Charging iEar System

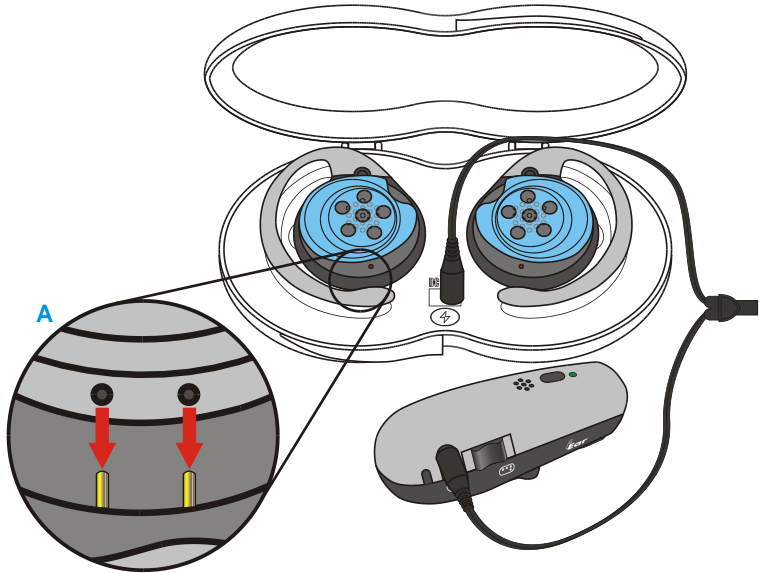
Your earpieces should be charged and stored in the convenient carry case. The transmitter can be charged at the same time.

Placing your Earpieces in the Carry Case

Insert each earpiece carefully into its appropriate slot as indicated, taking care not to damage the golden charging pins as in illustration A below.

Charging your iEar system

- 1. Plug charger into the mains but **DO NOT** switch on.
- 2. Connect the charger to the transmitter and to the carry case with earpieces securely in place.
- 3. Switch **ON** at the mains. **Red LED** will illuminate on both Earpieces and transmitter to indicate charging. A full charge will take approx. 2 hours and last 18 hours (approx). The transmitter **LED** will shine **blue** on full charge.

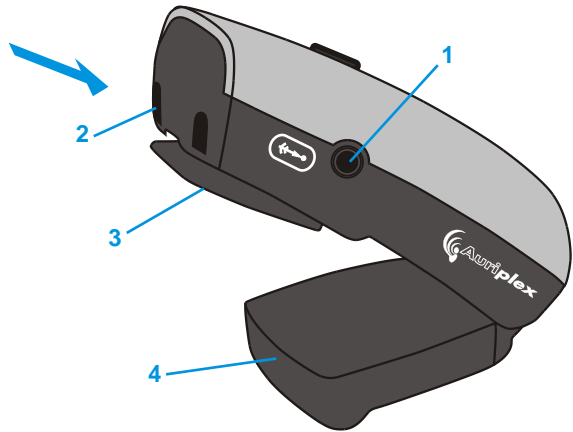


The Transmitter

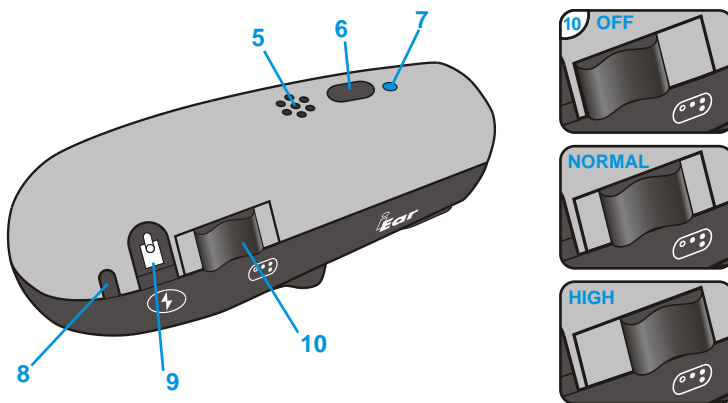
This unique device effectively becomes your portable ear. You can strategically position it for your maximum benefit in a wide range of hearing environments. Your listening experience can be even further enhanced by customising your settings.

The transmitter can be attached to clothing, worn around the neck with the lanyard or free standing on any suitable flat surface.

- 1. **Direct audio input:** Listen to devices such as a television, or an iPod on your earpieces through this port.
- 2. **Directional microphone:** Picks up sound coming in the direction of the blue arrow.
- 3. **Clip:** Allows attaching the transmitter to your clothing or to other's.
- 4. **Table stand:** Open to stand the device on a flat surface.
- 5. **Surround sound microphone:** Picks up sound coming from all directions.



- 6. **Microphone selector:** Press this button to switch between the surround sound and directional microphones.
- 7. **Indicator for selected microphone**
 - Blue LED:** Indicates sound will be picked up only in one direction only.
 - Red LED:** Indicates sound will be picked up from all directions.
- 8. **Charging indicator:** Shines **red** during charging.
- 9. **D.C. power input:** Used to charge the transmitter.
- 10. **OFF/Normal/High switch**
 - 'Normal' mode: Turns the transmitter on to a normal sound level.
 - 'High' mode: Boosts the sound to its maximum level.



Auriplex Ltd.

23, Cambridge Science Park
Milton Road,
Cambridge CB4 0EY, United Kingdom

T +44 (0) 1223 437010 E info@auriplex.com W <http://www.auriplex.com>



Using your iEar system

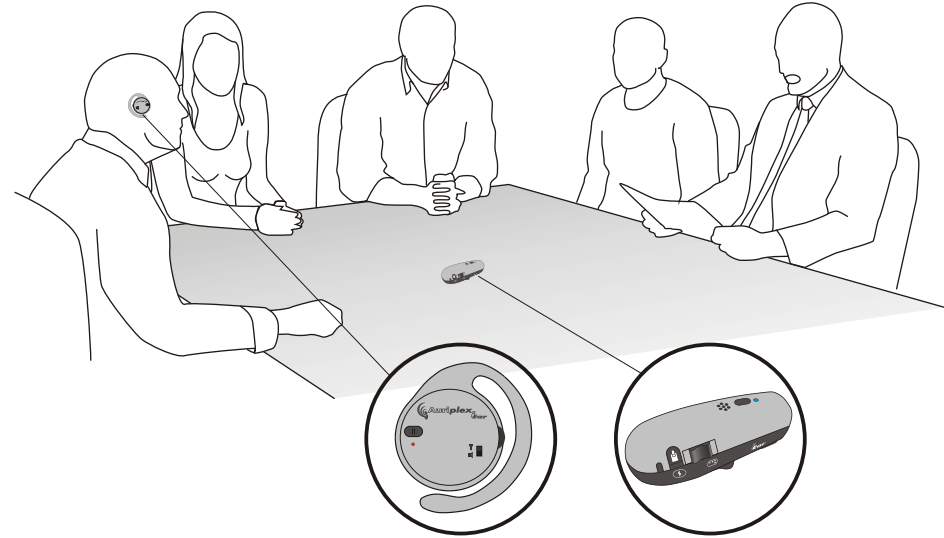
Your iEar is a versatile, portable, easy to use assistive listening system that can greatly improve your hearing ability and enhance your quality of life. **Personalise it simply to your activities.** Position it as you want for your hearing pleasure.

- **Listen to a sound source near or far away** by either placing or pointing the transmitter. Our wireless technology will allow you to go as far as 25 metres away with your earpieces still delivering the sound to your ears without compromising on quality, whether or not there is visual contact.
- **Select what you want to hear** from the surround sound or directional microphones on your transmitter or direct audio input from other devices for high fidelity listening.
- **Minimise ambient noise** by amplifying the sound at source using the OFF/Normal/ High sound level switch on the transmitter.

†Users with T switch enabled hearing aids: With the earpieces set in T mode, the iEar acts as a hearing aid add on. It creates your own personal portable induction loop to deliver clear sound devoid of feedback to your ears via your hearing aid.

Your hearing aid will also have to be in T mode. **This setting can be used in any of the following situations as long as you have a T switch enabled hearing aid.**

Here are some suggested settings for a few listening environments. We would encourage you to experiment with the settings to better suit your needs.



A quiet place with one appealing sound source†

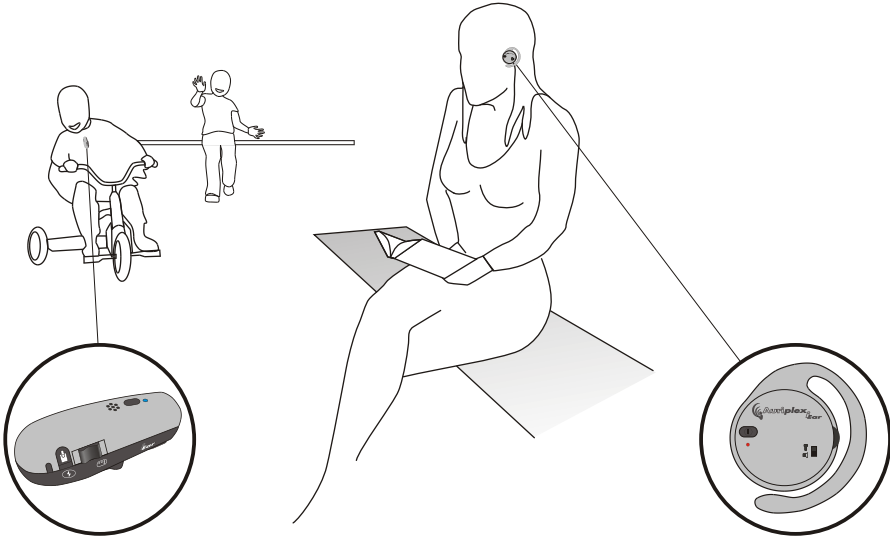
E.g: At a business meeting with one person, at ceremonies.

You could give the transmitter to the person to wear using the clip, lanyard or just in her pocket, and set the microphone to Normal, Omni directional (**Red**) mode.

Or, you could place it on the table in front of her and direct it towards her in Normal directional (**Blue**) mode.

Transmitter Settings	
Microphone selector	Blue if on a table, pointing towards the person Red if on the person
Off/ Normal/ High	Normal

Auriplex iEar
Flexible, Versatile, Easy to use, Portable, Life Enhancing



A Noisy place with One Appealing sound source†

E.g: In class, at the restaurant or Café with someone special, at a conference or large meeting, at a party or gathering.

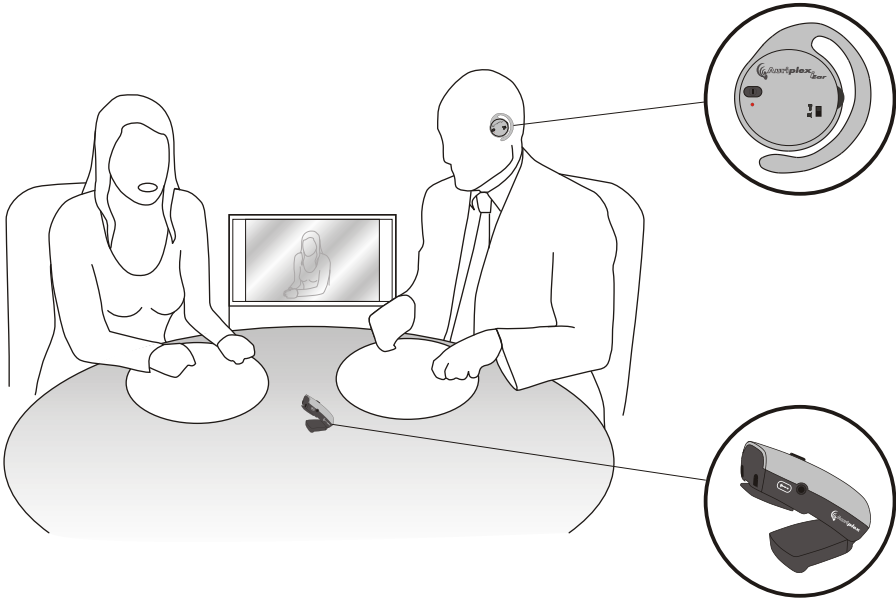
We recommend giving the transmitter to the speaker to wear using the clip or lanyard, and setting the microphone to Surround Sound (**Red**) and **High** sound level mode. You could alternatively place the transmitter on the table and direct it towards the speaker in directional (**Blue**) and **High** sound level mode.

Transmitter Settings	
Microphone selector	Blue if on a table towards the person Red if on the person
Off/ Normal/ High	High

Direct Audio Input†

E.g: Listening to your personal audio player, the television, your mobile.

Should you want to immerse yourself into a film or melody, you can plug in a 3 mm standard audio cable from your audio or audiovisual equipment into the iEar transmitter direct audio input. This will convey sound at high fidelity to your ears.



A Quiet setting with Several Appealing sound sources†

E.g: At boardroom business meetings, family gatherings, at the movies.

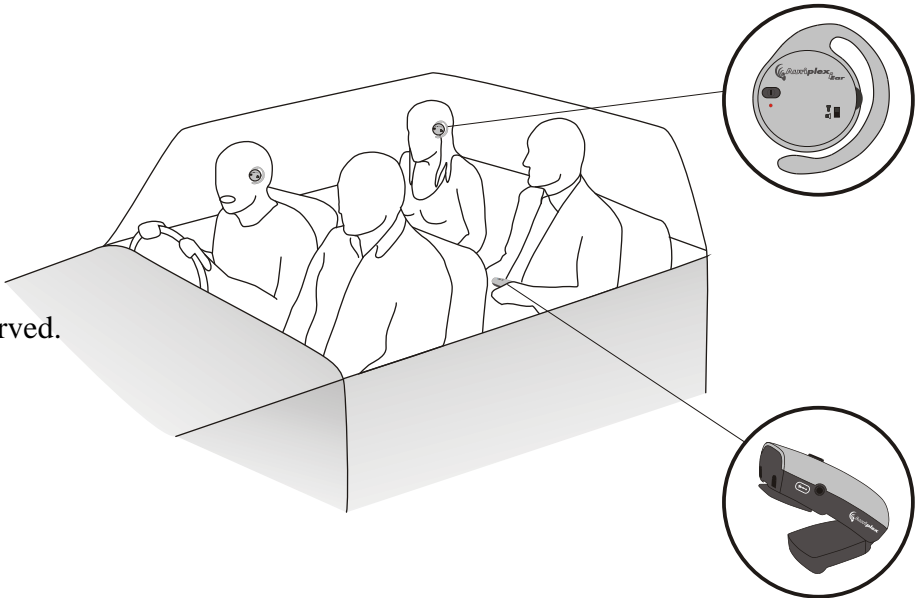
When you need to hear several people or sound sources in small enough setting with minimal background noise, you could place the transmitter on a table or other appropriate central point from the speakers and interesting sound sources and use the settings below.

Transmitter Settings	
Microphone selector	Red (on the table)
Off/ Normal/ High	Normal

When you need to be aware of your surroundings†

E.g: While commuting and needing to hear ambient sounds e.g. bike riding, walking, or while watching the television show with relatives and friends.

These also apply in case you need to keep track of the surrounding, say while running, or riding your bicycle when you could carry the transmitter on you.



A noisy situation with a small group of people†

E.g: At the restaurant or the pub with a small group of friends, or travelling with friends.

When you need to hear several people or sound sources in a noisy environment, you could place the transmitter as near as possible to the people speaking.

Transmitter Settings	
Microphone selector	Red (on the table)
Off/ Normal/ High	High

Care

Please see your warranty and care card for advice on how to derive a lasting and pleasurable use from your iEar.

